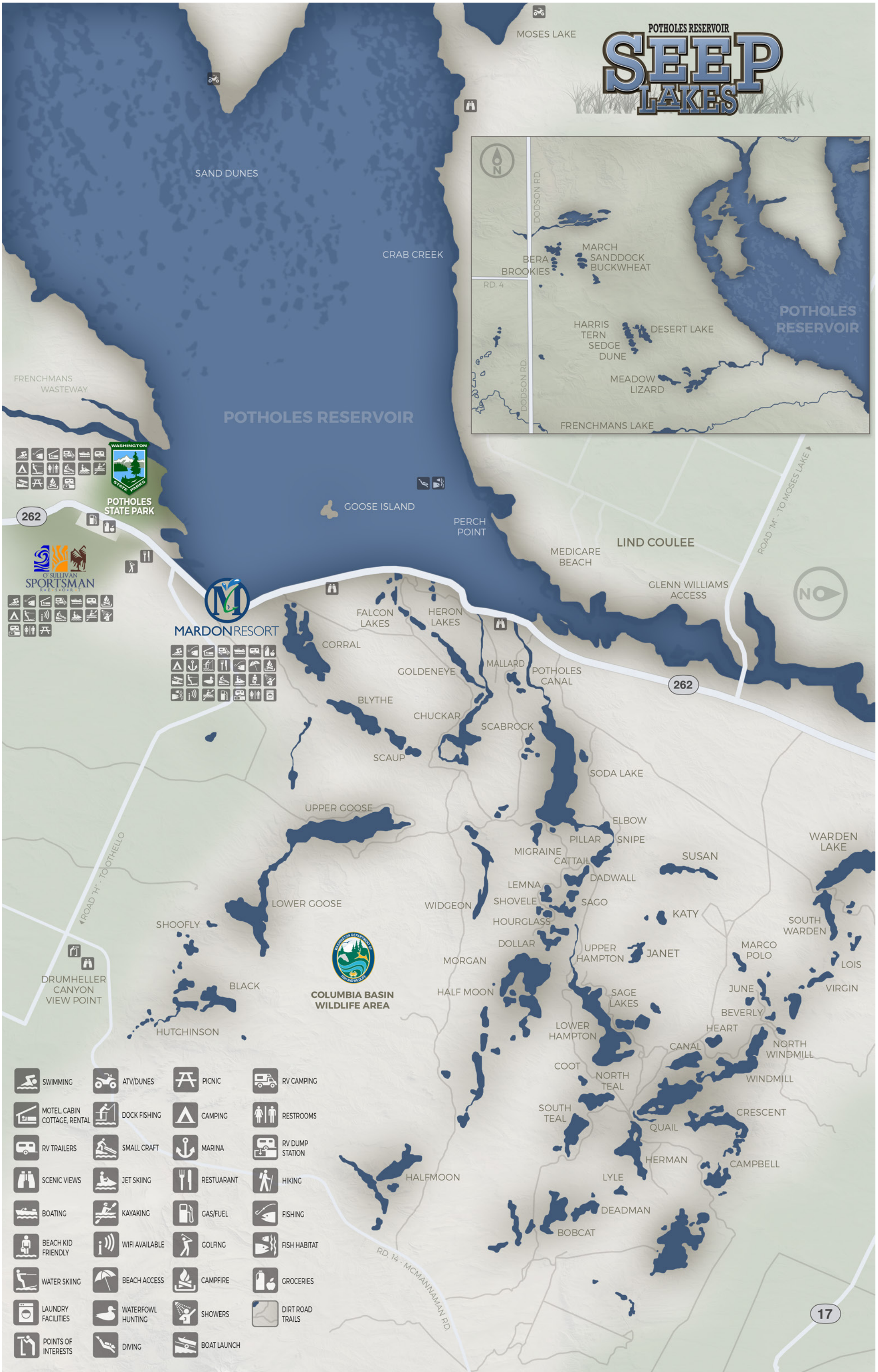


POTHOLES RESERVOIR SEEP LAKES



LAKE DESCRIPTIONS

* Developed Access Area

** Walk in

*** Open All Year

*** **BLACK:** walleye, bass, perch, crappie (**)

*** **BLYTHE:** rainbows, rough boat launch, Rehabbed in 2007. (*)

BOBCAT CREEK AND LAKE: largemouth bass, bluegill, crappie, open April 1st-Sept. 30th (**)

*** **CAMPBELL:** private lake, not open to public fishing

*** **CANAL:** rainbows, good boat launch, handicapped fishing access and handicap toilet. Rehabbed in 2010.

CATTAIL: (in Pillar-Widgeon group) rainbow trout only, open April 1st-Sept. 30th (**)

*** **CHUKAR:** (connected to Scaup) rainbows (**)

COOT: open April 1st-Sept. 30th (**)

*** **CORRAL:** rainbows, good boat launch on north end with handicapped access. Rehabbed in 2007. (*)

COYOTE CREEK & LAKE: largemouth bass, bluegill, crappie, open April 1st-Sept. 30th (**)

*** **CRESENT:** (on irrigation canal next to long lake) walleye, large and small mouth bass, crappie, perch, rainbow, whitefish, bluegill. (**) The part of the road on private ground to Crescent has been closed.

DABBLER: rainbows, open April 1st-Sept. 30th (**)

DEADMAN: largemouth bass, bluegill, crappie, open April 1st-Sept. 30th (**)

*** **FALCON:** (3 lakes just below O'Sullivan Dam) rainbow (**)

GADWELL: (in Pillar-Widgeon group) trout, open April 1st-Sept. 30th (**)

*** **GOOSE LOWER:** largemouth bass, walleye, perch, crappie, rainbow, bluegill and cutthroat. Rehabbed in spring 1997. (*)

*** **GOOSE UPPER:** rainbow trout, walleye, large and small mouth bass, perch, bluegill, crappie (*) (**)

*Actually both depending on the time of the year.
Road closed from May to September*

HALFMOON: largemouth bass, sunfish and perch rehabilitated in 1998, open April 1st-Sept. 30th (**)

HAMPTON LOWER: rainbow, no gasoline motors allowed, rough boat launch, open April 1st-Sept. 30th (*)

HAMPTON UPPER: rainbow up to 26" in the spring of 1999. On March 13, 1998 Mr. Ravencroft caught a 10 lb. 13 oz. rainbow. No gasoline powered motors allowed. Open April 1st-Sept. 30th. (**)

*** **HARRIS-DESERT WILDLIFE RECREATION AREA LAKES:** largemouth bass, bluegill and sunfish, rehabbed 2010 (**)

HAYS CREEK: largemouth bass, bluegill, crappie, open April 1st-Sept. 30th (**)

*** **HEART:** rainbow, triploid steelhead planted in 1998, Rehabbed in 2010. (*)

HERMAN: rainbow, great lake to bow and arrow fish for carp. Open April 1st-Sept. 30th (**)

HOURGLASS: (in Pillar-Widgeon group) trout, open April 1st-Sept. 30th (**)

HUTCHINSON: all game fish, no gas powered boats allowed. Rough boat launch, this lake was rehabbed in 1998 after installing barriers to keep carp out. Carp rut in the shallows which destroys the spawning habitat of the Spiny Ray, open April 1st-Sept. 30th. (*)

*** **JANET:** rainbows (**)

*** **JUNE:** rainbows, rehabbed in 2010 (**)

JUVENILE: warmwater species, anglers under 15 years only, open April 1st-Sept. 30th (**)

*** **KATY:** rainbows (**)

LEMNA: (in Pillar-Widgeon group) rainbows, open April 1st- Sept. 30th (**)

*** **LOIS:** rainbows (**)

*** **LONG:** (on irrigation canal) rainbows, walleye, large and small mouth bass, crappie, perch, bluegill, whitefish (*)

LYLE: rainbow and good bow and arrow fishing for Carp (*) open April 1st-Sept. 30th

*** **MARCO POLO:** rainbow (**)

*** **MARIE:** mixed species

*** **MIGRANE:** (bottom of Soda) very slow fishing (**)

MCMANNAMON: warmwater species, rehabbed in 1998 open April 1st-Sept. 30th, short walk (**)

MORGAN: rainbow and cutthroat, open April 1st-Sept.30th. Private shoreline, accessible via Halfmoon Lake only (**)

PARA: warmwater species, juvenile anglers under 15 years only, open April 1st-Sept. 30th (**)

PILLAR: rainbows, open April 1st-Sept. 30th (**)

*** **PIT:** rainbows (**) Private land, access in question, rehabbed in 2010

POACHER: (in Pillar-Widgeon group) trout, open April 1st-Sept. 30th (**)

*** **QUAIL:** rainbows, catch and release, fly fishing, only artificial flies with a single barbed hook, use of motors prohibited, rehabbed in 1998 (**)

*** **SAGE:** rainbows, rehabbed 2010 (**)

SAGO: (in Pillar-Widgeon group) trout, open April 1st-Sept. 30th (**)

*** **SCAUP:** (connected to Chukar) rainbows (**)

SHINER: (connected to Hutchison) largemouth bass, bluegill, no gasoline powered boats allowed, open April 1st-Sept. 30th (**)

*** **SHOOFLY:** largemouth bass, bluegill, perch, but has tendency to winter kill (**), open April 1st-Sept. 30th (**)

SHOVELER: (in Pillar-Widgeon group) trout, April 1st-Sept. 30th (**)

SNIPE: (in Pillar-Widgeon group) trout, open April 1st-Sept. 30th(**)

*** **SODA:** spiny rays, walleye, large and small mouth bass, crappie, bluegill, perch, whitefish, trout (on irrigation canal) (*)

*** **SUSAN:** rainbow, rough boat launch (*)

TEAL: (North and South)-rainbows, small spiny rays, rehabbed in 2010 open April 1st-Sept. 30th (*)

THREAD: (outlet of Lyle Lake) largemouth bass, perch, poor fishing for rainbows, open April 1st-Sept. 30th (*)

*** **VIRGIN:** rainbows (**)

WARDEN AND SOUTH WARDEN: rainbows and tiger trout Rehabbed in 1998, opens last Saturday of April to Sept. 30th (*)

WIDGEON: (in Pillar-Widgeon group)-trout, open April 1st-Sept. 30th (**)

*** **WINDMILL:** rainbows, handicapped fishing access, rehabbed in 2010 (*)

*** **POTHOLES RESERVOIR:** walleye large and smallmouth bass, trout, perch, crappie, bluegill (*)

Always check the current regulations